

Project: T1/E1 TDMoP Card



AimValley Solution

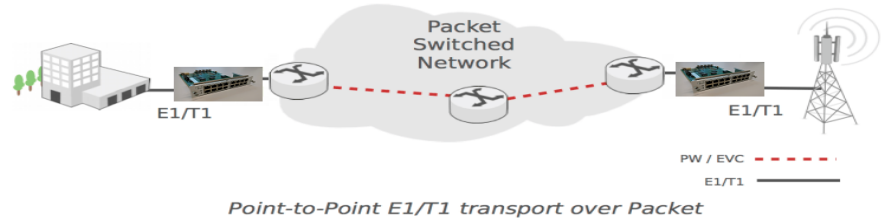
- Software development – Titan API
- Hardware design – field replaceable unit with 16x T1/E1 ports
- CES – SAToP and CESoPSN
- Timing modes – DCR, ACR, re-timing, loop timing
- Engagement model: Time & Material

Key technologies:

- AimValley IP for Circuit Emulation Services

Customer Objectives

- Lower cost replacement for existing Circuit Emulation solution
- In-field replaceable unit
- Feature parity or better



Results & Added Value

Efficiency	Re-use of AimValley CES IP to reduce time-to-market and development costs
Successful	Multiple releases with incremental features
Partnership	Titan API integration in customer host Software Hardware design in close collaboration with customer
Innovative	Replace 4 ASICs with 1 FPGA, cost and power reduction